



Fitting Instructions

TOWBAR TY155A
For Toyota Landcruiser V8

MATERIALS

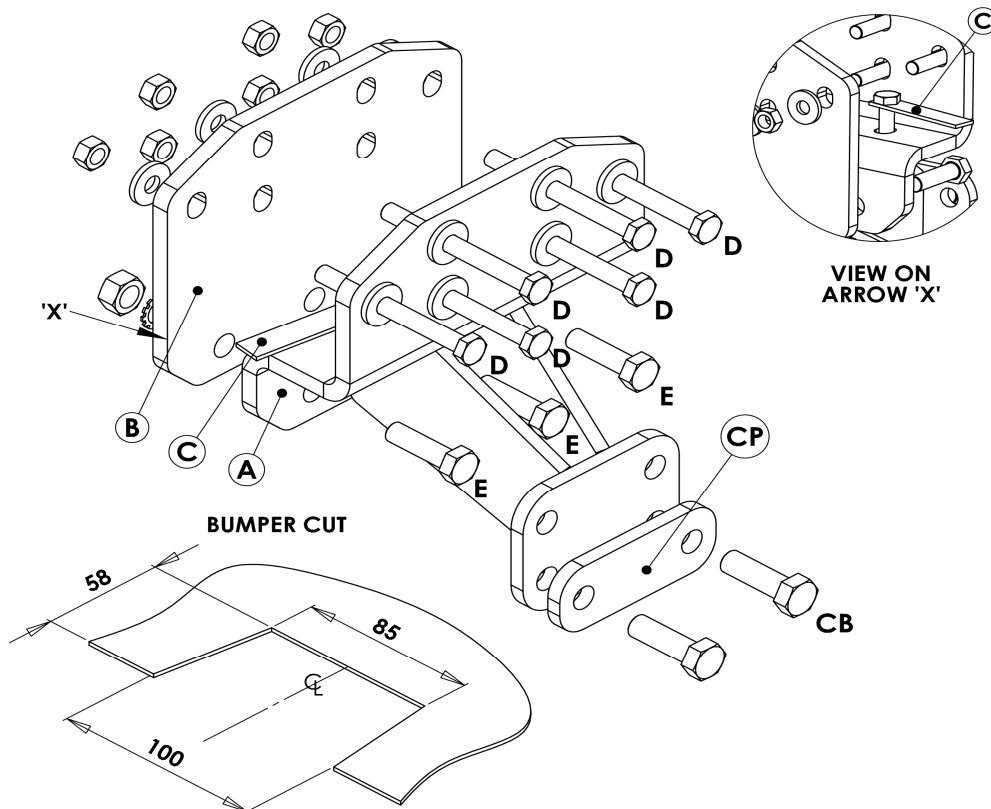
A	1	Main Assembly
B	1	Spreader Plate
C	2	Captive Bolt Strap, M12 x1.75 Nyloc Nuts and Flat Washers 30mm O.D.
D	6	M12 x 120 x 1.75 Bolts, Nyloc Nuts and 12 Flat Washers 30mm O.D.
E	3	M16 x 40 x 2.0 Bolts, Nuts and Lock Washers.
CP	1	Coupling Packer.
CB	2	M16 x 60 x 2.0 Bolts, Nuts and Lock Washers.

This towbar must be used with either a Witter Towball (part number Z11) or Class A50-1 or A50-X towball dimensionally conforming to A50-1 with a 'D' and 'S' value greater than or equal to that of the towbar.

Recommended torque settings: Grade 8.8 bolts: M8 - 27Nm, M10 - 53 Nm, M12 - 95 Nm, M14 - 150 Nm, M16 - 214 Nm
Grade 10.9: M12 - 139Nm, M10 - 78Nm

FITTING

1. Remove bumper, release tread plate on top face of bumper, (pull upwards to release clips), remove 3 x torq head screws and 1 plastic push clip per wheel arch, 8 x hex head screws, 2 x torq head screws and 2 x plastic push clips along bottom edge of bumper, 2 x plastic push clips on vertical face of boot opening and 5 x torq head screws along horizontal face of boot opening. Pull tips of wheel arch out to the side and slide bumper rearward. Disconnect electric connection.
2. Remove bumper support bracket fixed to lower edge of bumper beam (2 x hex head screws). Remove central bumper support from rear face of bumper (1 x hex head screw) and lower spare wheel.
3. Insert captive bolt strap into rear beam through over size hole on forward face and locate through existing mountings on bottom face,
4. Attach main assembly (A) to lower face of rear beam using fixings (C). Attach spreader plate (B) to forward face of beam using fixings D. Fit Main assembly (A) to spreader plate (B) using fixings (E).
5. Fully tighten all fixings starting with (C).
6. Cut bumper and re-attach. Note bumper support on lower face of beam can be cut around towbar neck and re-attached if required.



W0001TY155A-FIT\$011109210000