



Fitting Instructions

TOWBAR SY5A
for Ssangyong Rexton
2002 - 2006

MATERIALS

A	1	Towbar Mainframe with European facing 94/20/EC – A50-1
B	1	10mm Coupling Packer
C	1	Right Side Profile
D	2	Spreader Plate
E	1	Left Side Profile
F	4	M12 x 130 x 1.75 Bolts, Nyloc Nuts and Washers (25mm O.D)
G	2	M12 x 130 x 1.75 Bolts, Nyloc Nuts and 4 Large Flat Washers (40mm O.D)
H	6	M12 x 40 x 1.75 Bolts, Nyloc Nuts and Washers (25mm O.D)
CB	2	M16 x 50mm Coupling Bolts, Nuts and Lock Washers
Z	1	ZEP35 Electrical plate (not shown)

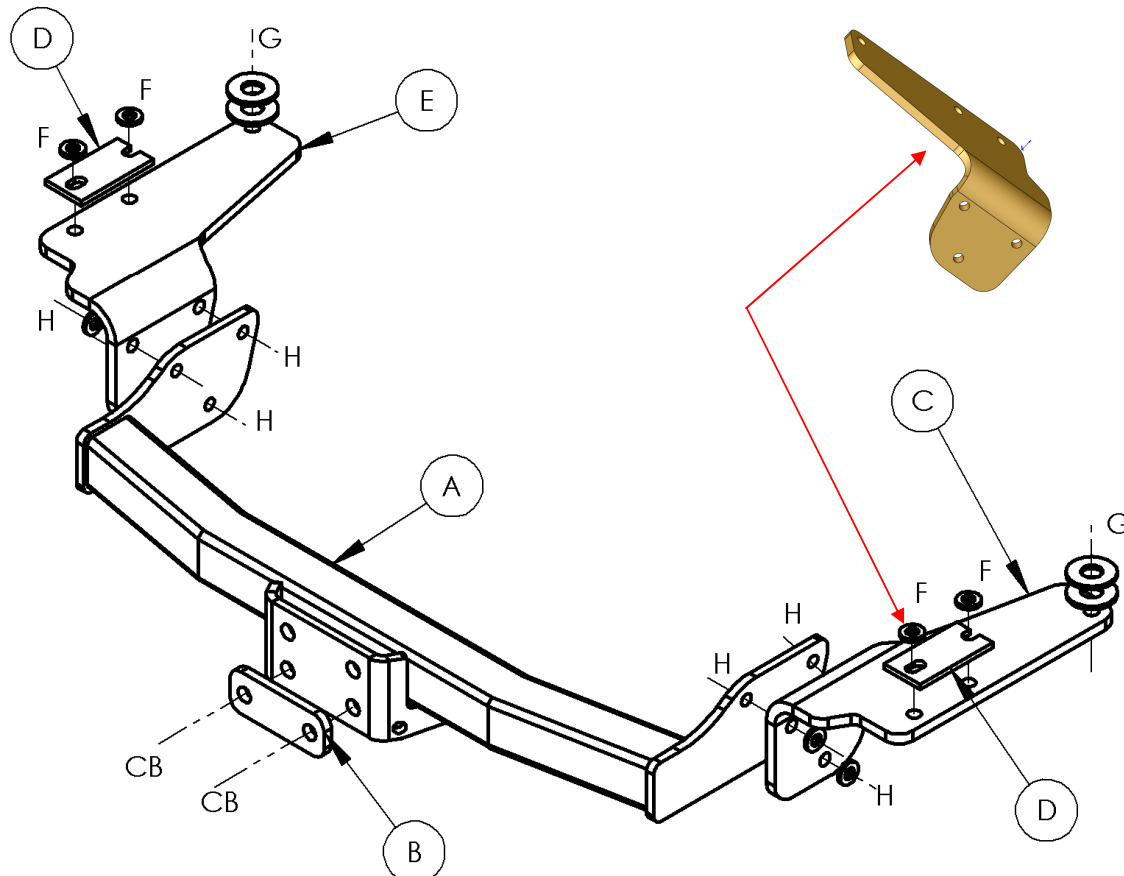
FITTING

1. Loosen rear Exhaust mounting Bush to aid attachment of side profile C to chassis.
2. Loosely attach side Profiles (C and E) using Bolts F and G, with Spreader Plates (D) and Washers (G) on top side of chassis rail as shown. **Note:** Ensure Spreader Plates (D) are sitting **flat** on the top surface of the chassis rail, and pushed as far **forward** as possible (without riding up on the adjacent weld bead).
3. Loosely attach Towbar Mainframe (A) using Bolts (H).
4. Ensure Towbar Mainframe (A) is level and finally, **tighten all Bolts.**

Note: This towbar must be used with either a Witter Towball (part number **Z11**) or Class A50-1 or A50-X towball dimensionally Conforming to A50-1 with a 'D' and 'S' value greater than or equal to that of the towbar.

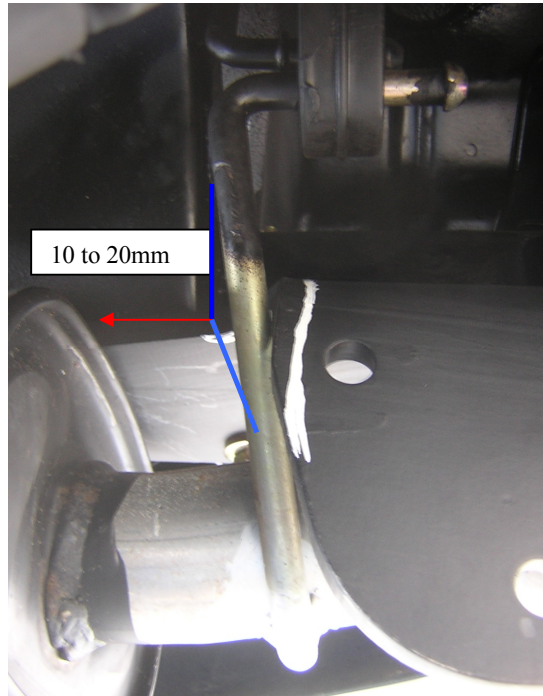
Please refer to the vehicle specification for the trailer weight and nose limits, which **must be observed.**

Recommended torque settings: M8 - 27Nm, M10 - 53 Nm, M12 - 95 Nm, M14 - 150 Nm, M16 - 214 Nm



Fitting Update: On some SY5 applications there has been an issue with the rear exhaust hanger interfering with Side Arm (C)

Adjust bracket 10 to
20mm Away from Side
Arm



W0001SY5A-FIT\$010802220000