



Fitting Instructions

KA23U
TOWBAR for
For Kia KA23 &
Pro Ceed KA23Q
Feb 2008-

MATERIALS

A	1	Cross Bar
D	1	Angle Cleat.
E	1	Right hand Cleat.
F	6	M10 x 40 x 1.25 fine pitch Bolts, Lock Washers and 6 Flat Washers (25mm OD.)
G	3	M12 x 35 x 1.75 Bolts and Nyloc Nuts and 1 Flat Washer (25mm OD.)
ZE	1	Electrical Plate (ZEP3)
BC	4	M12 Bolt Caps

For use with either

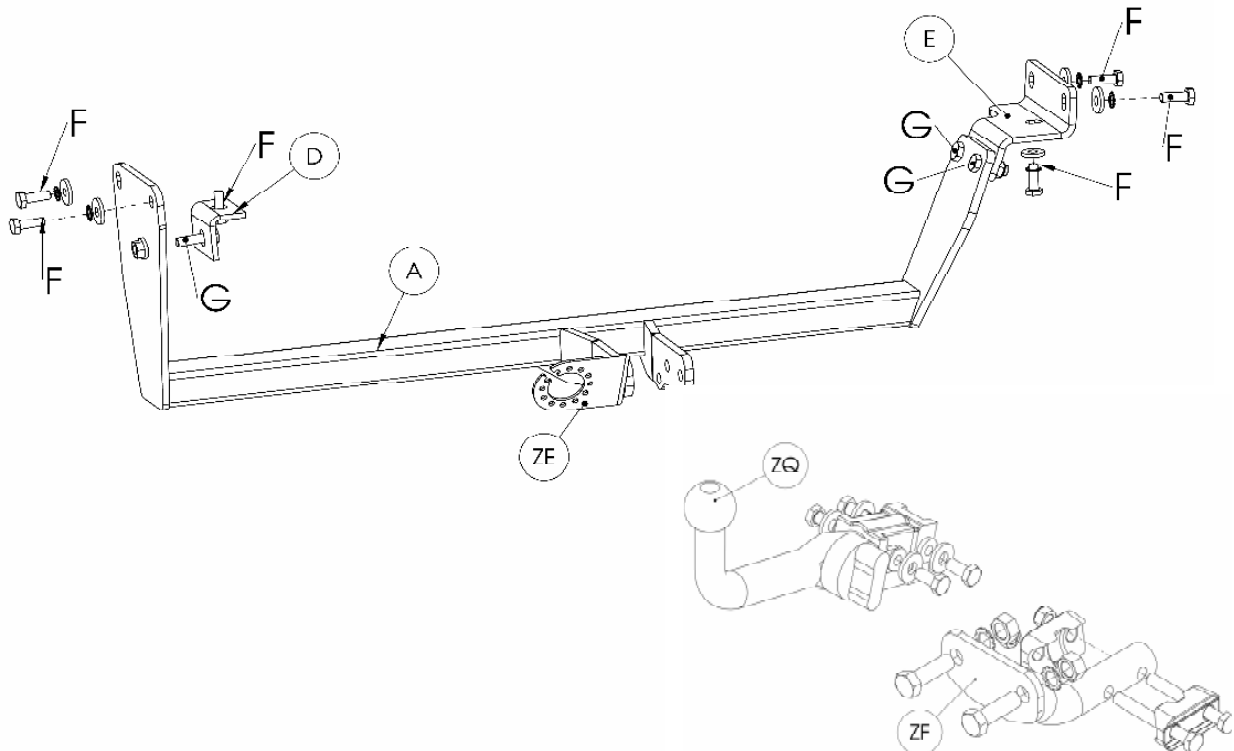
KA23 Flange neck option – ZF2030. **Note:** This towbar must be used with either a Witter Towball (part number Z11) or Class A50-1 or A50-X towball dimensionally Conforming to A50-1 with a 'D' and 'S' value greater than or equal to that of the towbar.

KA23Q Detachable neck option – ZQ2030. Please refer to ZQ fitting instructions for installation

FITTING

1. Remove any protective coating around mountings in chassis.
2. Loosely attach Angle Cleat (D) and (E) to existing captive nuts in vehicle chassis using Bolts (F) with Flat Washers.
3. Loosely attach Crossbar (A) to Cleats (D and E) using Bolts (G).
4. Loosely attach Neck option and Electrical Plate (Z) to Crossbar (A) using Bolts (H).
5. Fully tighten all bolts and fit Bolts Caps (BC) to Bolts (H).
6. Check clearance around exhaust tail pipe and adjust hanger to gain more clearance if required
7. Attach neck option.

Recommended torque settings: Grade 8.8 bolts: M8 - 27Nm, M10 - 53 Nm, M12 - 95 Nm, M14 - 150 Nm, M16 - 214 Nm
Grade 10.9: M12 – 139Nm, M10 – 78Nm



W0001KA23U-FIT\$010802220000